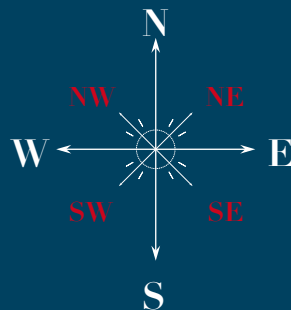
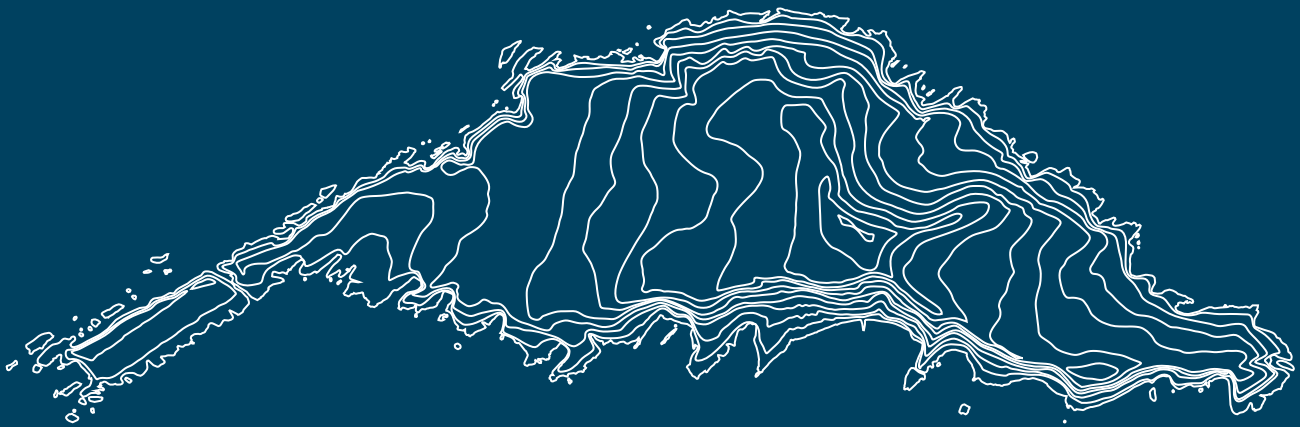


# INTERNATIONAL PHOTOGRAPHER

← *The world through your viewfinder* →

# FAROE ISLANDS DIGITAL ATLAS

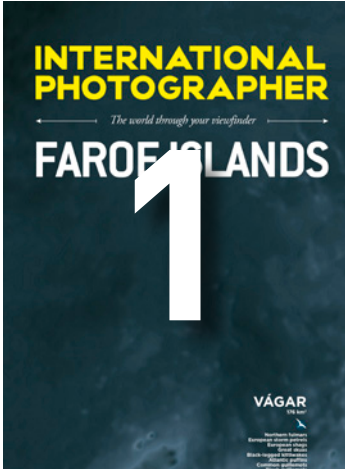


WHERE TO GO  
WHAT TO PHOTOGRAPH

# FAROE ISLANDS COUNTRY SIZE



# HIGH DEFINITION MAP (16 PAGES SPREAD)



1



5



9



13



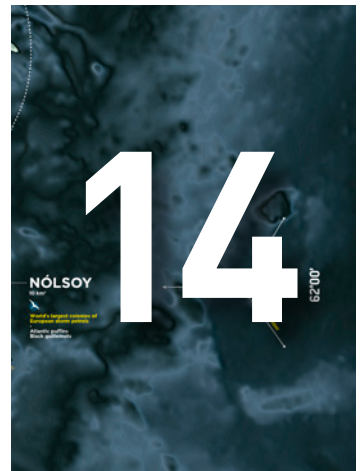
2



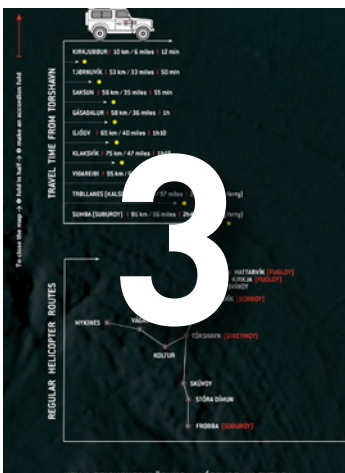
6



10



14



3



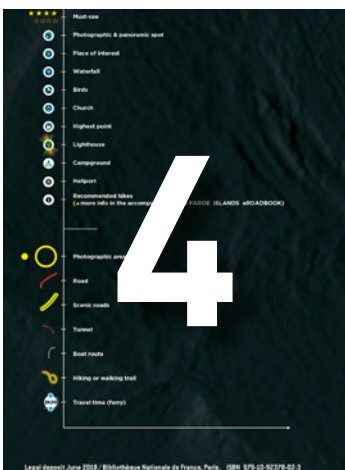
7



11



15



4



8



12

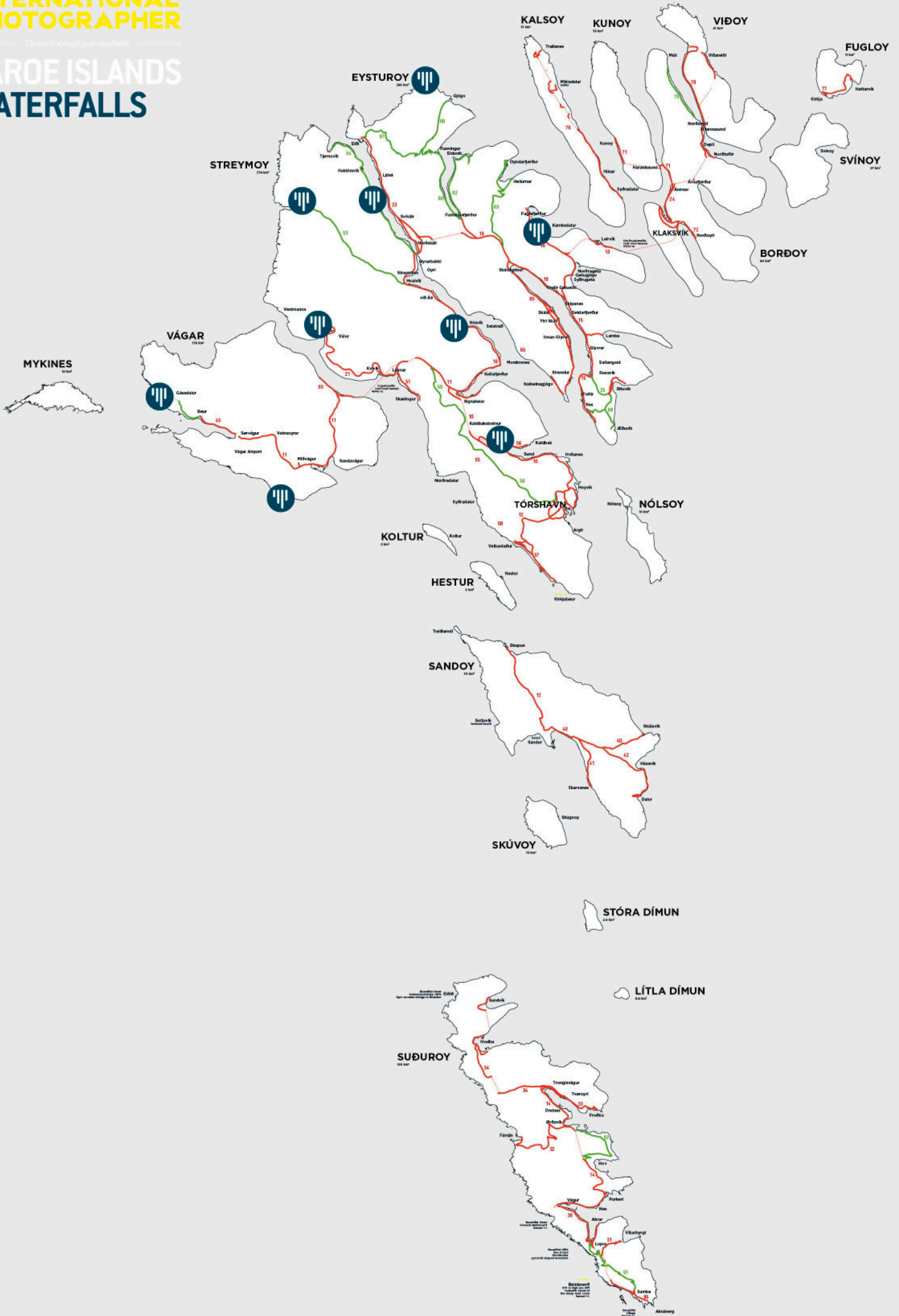


16

A stylized map of the Hawaiian Islands. The main island of Hawaii is shown in white, with the word "Waterfalls" centered on it in a black serif font. To the northeast, the smaller islands of Maui, Molokai, and Oahu are shown in black. The background is a solid light blue color.

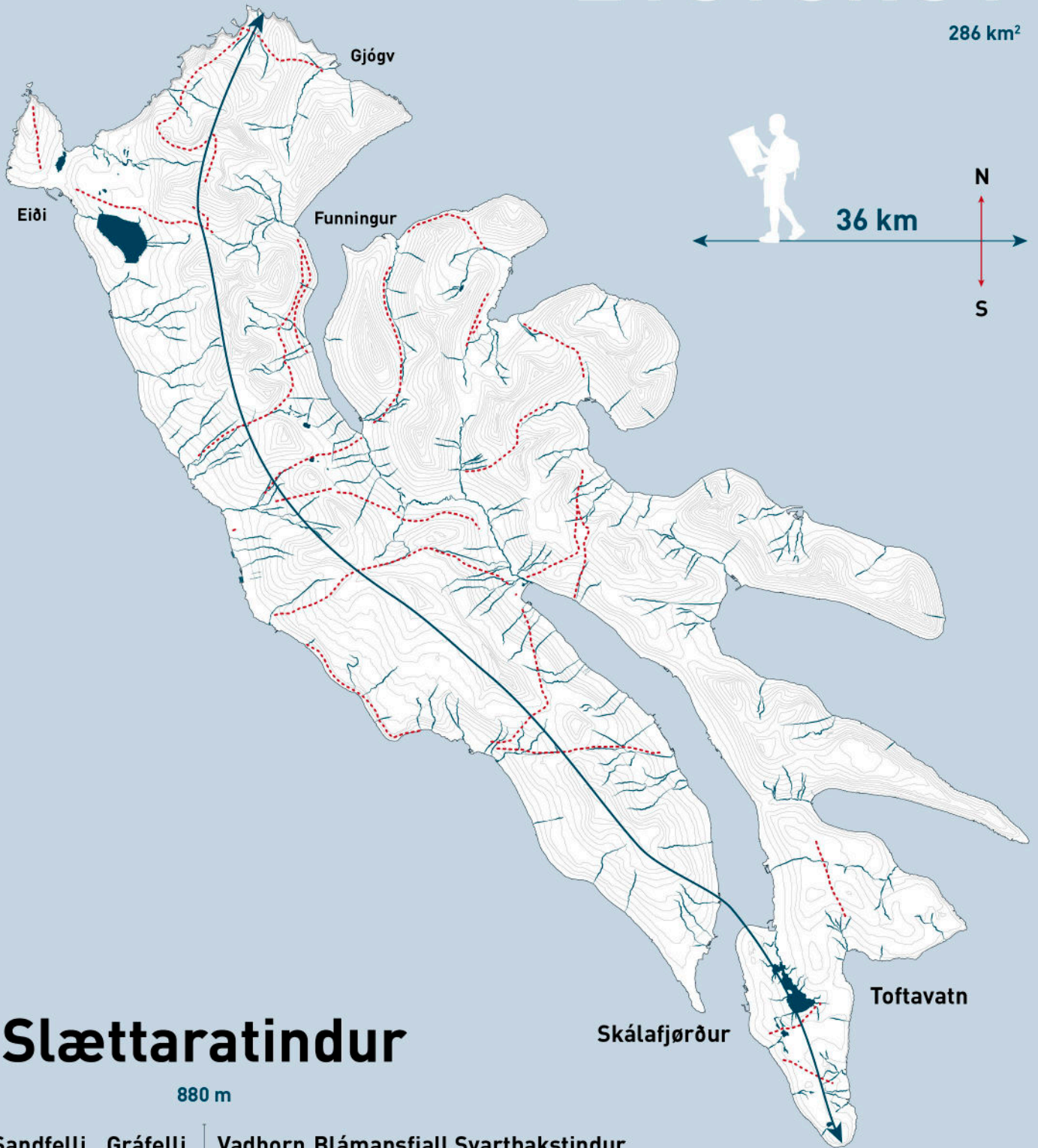
# Waterfalls

# FAROE ISLANDS WATERFALLS



# EYSTUROY

286 km<sup>2</sup>

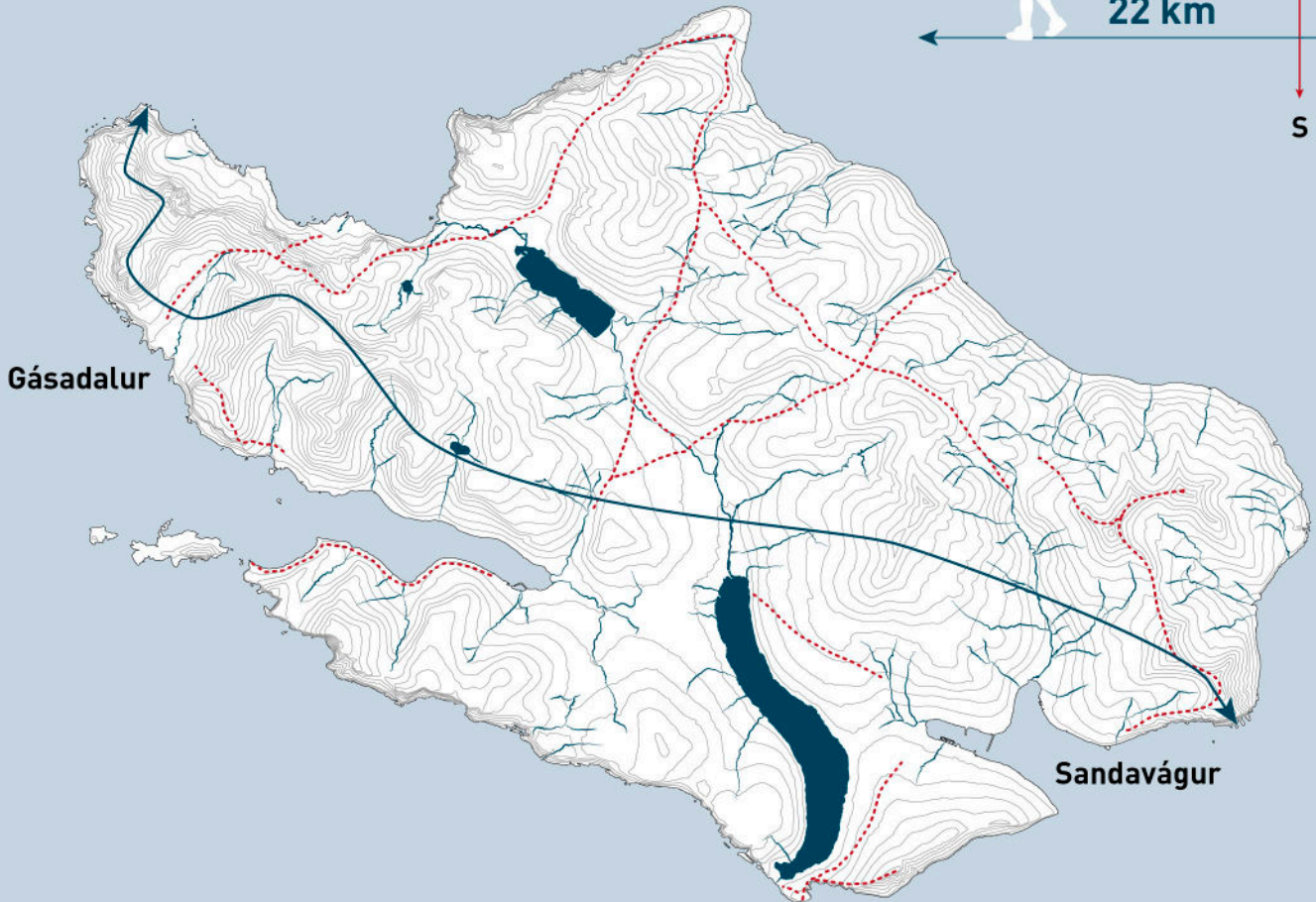


## Slættaratindur

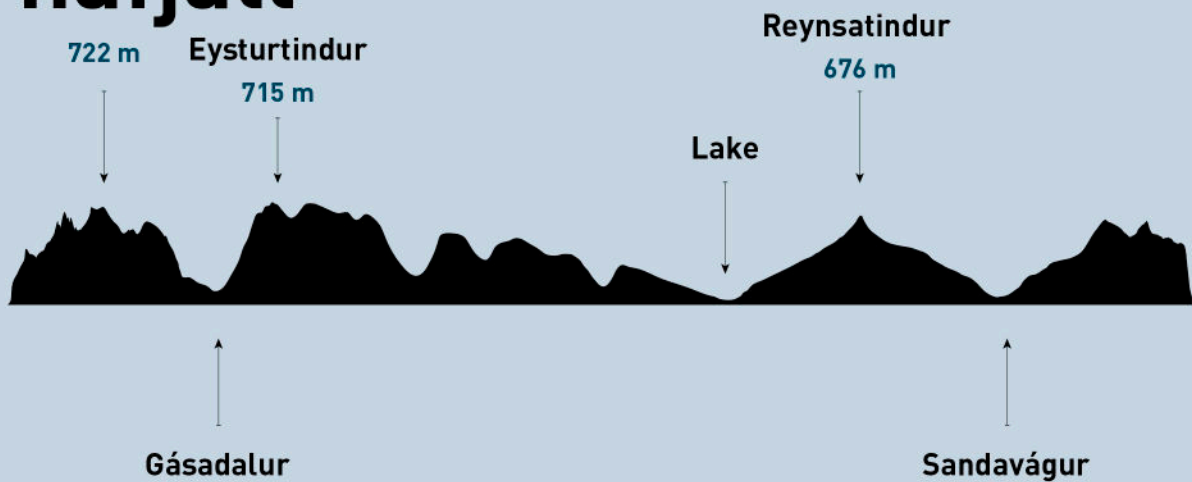


# VÁGAR

176 km<sup>2</sup>



## Árnafjall





# Useful Maps

1

Map of Tórshavn

2

Ferry routes

3

Helicopter routes



Vágar Eysturoy

Bónus Miðlon (alcohol)

Nice area for a gentle walk

Heliport

Nordic House

SMS shopping mall (food)

Main street

← Route 50 Scenic road

Føroyar Hotel

Hostel Kerjalon

Visit Tórshavn Guðrun & Guðrun Woolen clothing

Fotobúðin Photographic store

H. N. Jacobsens Bókhandil Oldest bookshop in Tórshavn

Visit Faroe Islands

Tinganes

City Center

Sirkus bar

P/F Jógván Weihe Camping gear weihe.fo



# MAP OF THE FERRY ROUTES

